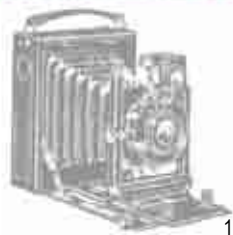


PHOTO NON DISPONIBLE



1

PHOTO NON DISPONIBLE



2

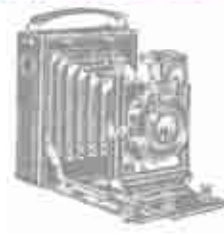


4



5

PHOTO NON DISPONIBLE



8

PHOTO NON DISPONIBLE



9



3



6



10



11



7



12

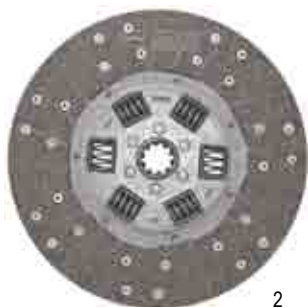


## EMBRAYAGE : MECANISME, DISQUE ET BUTEE

| Reference   | OEM  | Fig | Description  | Type Tracteur  |
|-------------|--|-----|--|--|
| 225002121   | F139100100013 F139100100014  | 1   | Méca. LUK Ø 250/225, double moyeu 46x50, 8 can.                              | Farmer 2 2D 2E 2DE   |
| 325000926   | F139103100011  | 2   | Disque AV LUK Ø 250 organique, 10 can. moyeu 23x29                           |  |
| 3151157001  | H199104100010 345100100020 F281100100010                           | 3   | Butée SACHS avec support   |  |
| 1882172107K |  |     | Kit embrayage complet, comprend : 125003621 + 325006426 + 500028700 + 6004   | Farmer 2S 3S 4S 5S<br>Farmer 100 101 101LS 101S 102 102LS 102S 103 103LS 103S 104 104LS 104S 105 105LS 105S 106 106LS 106S 108 108LS 108S 102LS                                  |
| 125003621   | F268102100010 F268102100011 X805230050000 X805230052000            | 4   | Méca. SACHS Ø 250, simple  |  |
| 325006426   | F138153420010 F250100100020 X805230102 X805230103 Z805230103010    | 5   | Disque AV LUK Ø 250 organique, 10 can.                                       |  |
| 500028700   | X623577500   | 6   | Butée 50x82x12   |  |
| 6004        |  | 7   | Roulement pilote   |  |
| 625134809K  |  |     | Kit embrayage complet, comprend : 625134809 + 20305280 + 20305180 + 28996660 |  |
| 625134809   |  |     | Kit embrayage comprend : 225002321 + 325006426                               |  |
| 225002321   | E205100020 Z205100100020 X805230003000 X805230007000 X805230002000 | 8   | Méca. LUK Ø 250, double 20 can., 36x40                                       | Farmer 100 103S 103SA<br>Farmer 200 200S 200SA 200V 201S 201LS 203P 203PA/II 203PA 203V 203VII 203VA 203VA/II 205P 205PA GT200 250GT GT300 345GT 345GTF 345GTM Agrobil F65B S821 |
| 325006426   | F138153420010 F250100100020 X805230102 X805230103 Z805230103010    | 5   | Disque AV LUK Ø 250 organique, 10 can. moyeu 26x32                           |  |
| 325013920   | 155102420010 H205100420020 Z205100420020                           | 9   | Disque AV LUK Ø 250 organique, amortisseur, 10 can. moyeu 26x32              |  |
| 20305280    | X612197000   | 10  | Butée petit Ø 65x97x23   |  |
| 20305180    | X612197100 X61297000000 X600197000                                 | 11  | Butée grand Ø 106x140x25   |  |
| 28996660    |  | 12  | Roulement pilote   |  |

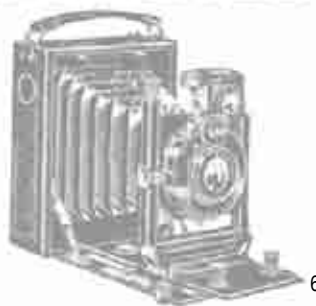


1



2

PHOTO NON DISPONIBLE



6

PHOTO NON DISPONIBLE



7



3



4



5



## EMBRAYAGE : MECANISME, DISQUE ET BUTEE

| Reference  | OEM   | Fig | Description  | Type Tracteur   |
|------------|---|-----|--|---|
| 630135009K |   |     | Kit embrayage complet, comprend : 630135009 + 20305280 + 20305180 + 28996660             | Farmer 200 204P 204PA 204VA 204V 205P 255GT 260P 260PA 260SA 260V 260VA 270P 270PA 270V 270VA 275S 275SA 275V 275VA 280GT 275GTII 280P 280PA Farmer 300 345GT 345GTM 360GT8 360GTH 360GTF 365GT 365GTH Agrobil S821 |
| 630135009  |   |     | Kit embrayage complet, comprend : 230001821 + 330003320                                  |   |
| 230001821  | Z207100100010 X805230026<br>E207100100010 X805230023                                  | 1   | Méca. LUK Ø 280, doubles ressorts  |   |
| 330003320  | Z207100420020 166100420011<br>F168100420010 H166100420010<br>H207100420020 X805230105 | 2   | Disque AV SACHS Ø 295 organique, 10 can.   |   |
| 20305280   | X612197000  | 3   | Butée AV 65x97   |   |
| 20305180   | X612197100 X61297000000<br>X600197000   | 4   | Butée PDF 106x140  |   |
| 28996660   |   | 5   | Roulement pilote   |   |
| 227000120K |   |     | Kit embrayage complet, comprend : 227000120 + 325013920 + 20305280 + 20305180 + 28996660 | Farmer 200 240S 250S 250SA 250V 250VA 260P 260PA 260S 260SA 260V 260VA  |
| 227000120  | E205100100010 Z205100100010   | 6   | Méca. LUK Ø 265/250, double 10 can., moyeu 36x40   |   |
| 325013920  | 155102420010 H205100420020<br>Z205100420020   | 7   | Disque AV LUK Ø 250 organique, amortisseur, 10 can. moyeu 26x32                          |   |
| 20305280   | X612197000  | 3   | Butée petit Ø 65x97x23   |   |
| 20305180   | X612197100 X61297000000<br>X600197000   | 4   | Butée grand Ø 106x140x25   |   |
| 28996660   |   | 5   | Roulement pilote   |   |



## EMBRAYAGE : MECANISME, DISQUE ET BUTEE

| Reference   | OEM  | Fig | Description  | Type Tracteur  |
|-------------|--|-----|--|--|
| 230011220K  |  |     | Kit embrayage complet, comprend : 230011220 + 330003320 + 20305280 + 20305180 + 28996660 |  |
| 230011220   | E207100100020  | 1   | Méca. SACHS Ø 280/295, double doigts acier   |  |
| 330003320   | Z207100420020 166100420011<br>F168100420010 H166100420010<br>H207100420020 X805230105                    | 2   | Disque AV LUK Ø 395 doubles ressorts   | Farmer 200 270P 275GT 275GTII 280P 280PA 280S 280SA 280V<br>Farmer 300 370GT   |
| 20305280    | X612197000   | 3   | Butée AV 65x97   |  |
| 20305180    | X612197100 X61297000000<br>X600197000  | 4   | Butée PDF 100x140  |  |
| 28996660    |  | 5   | Roulement pilote   |  |
| 1882347102K |  |     | Kit embrayage complet, comprend : 1882347102 + 18644820031 + 3151157001 + 6004           |  |
| 1882347102  | F178100101020 F1882347102<br>E198100100010 F178100100040<br>F178100101010                                | 6   | Méca. SACHS Ø 320, simple moyeu 22 can.  |  |
| 1864482031  | Z186126420010 F1864482031<br>F178100420020 H186126420010<br>H192104420010 H192104420020<br>H192104420030 | 7   | Disque AV SACHS Ø 320 organique, 10 can.   | Farmer 300 303 303LS 303LSA 304 304LS 304LSA 305 305LS 305LSA 306 306LS 306LSA 307 307LS 307LSA 308 308LS 308LSA 309 309LS 309LSA 310 310LS 310LSA 311 311LS 311LSA 312 312LS 312LSA<br>Favorit 500 511C |
| 133030120K  |  |     | Kit embrayage complet, comprend : 133030120 + 333005427 + 3151157001 + 6004              |  |
| 133030120   | Z312100101010 E198100100020<br>E312100101010   | 8   | Méca. LUK Ø 330, simple moyeu 22 can.  |  |
| 333005427   | Z199104420020 H199100420010<br>H199100420030 H199104420010<br>H199104420020                              | 9   | Disque AV LUK Ø 330 organique, 10 can.   |  |
| 3151157001  | H199104100010 345100100020<br>F281100100010  | 10  | Butée SACHS avec support   |  |
| 6004        |  | 11  | Roulement pilote   |  |

PHOTO NON DISPONIBLE

PHOTO NON DISPONIBLE

PHOTO NON DISPONIBLE

PHOTO NON DISPONIBLE



1



2



6



7



3



4



8



5



## EMBRAYAGE : MECANISME, DISQUE ET BUTEE

| Reference  | OEM                                       | Fig | Description  | Type Tracteur  |
|------------|---|-----|--|--|
| 633135519K |   |     | Kit embrayage complet, comprend : 633135519 + 3151157001 + 20305180 + 6004 |  |
| 633135519  |   |     | Kit Méca, comprend : 233003322 + 333012020                                 |  |
| 233003322  | E395100100010 Z119100100010               | 1   | Méca. LUK Ø 330/295, double moyeu 41x45, 22 can.                           | Farmer 200 206S 206V 206VA 206FA 207S 207V 207VA 207FA 208VA 208S 208PA 208FA 209S 209VA 209PA 209FA |
| 333012020  | H395100420020 Z395100420020 H395100420010 | 2   | Disque AV LUK Ø 330 caramétallique, 10 can. moyeu 26x32                    | Farmer 300 307C 308C 309C 380GT 380GTA 380GTH 390GTA 395GTA  |
| 3151157001 | H199104100010 345100100020 F281100100010  | 3   | Butée SACHS avec support   |  |
| 20305180   | X612197100 X61297000000 X600197000        | 4   | Butée grand Ø 106x140x25   |  |
| 6004       |   | 5   | Roulement pilote   |  |
| 228002221  | F140103100013                             | 6   | Méca. LUK Ø 280/250, double moyeu 46x50, 8 can.                            |  |
| 328001526  | 1864028209                                | 7   | Disque AV LUK Ø 280 organique, 10 can. moyeu 23x29                         | Favorit 1 2 3  |
| 25314787   | X623577400000                             | 8   | Butée AV 65x101,5x26   |  |

PHOTO NON DISPONIBLE



1

PHOTO NON DISPONIBLE



2

PHOTO NON DISPONIBLE



5

PHOTO NON DISPONIBLE



6



3



4



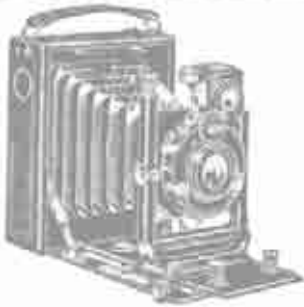
7


 F  
E  
N  
D  
T


## EMBRAYAGE : MECANISME, DISQUE ET BUTEE

| Reference  | OEM  | Fig | Description   | Type Tracteur |
|------------|--|-----|---|---------------|
| 628135209K |  |     | Kit embrayage complet,<br>comprend : 628135209 + 20305280<br>+ 20305180 | Favorit 3S    |
| 628135209  |  |     | Kit embrayage,<br>comprend : 228003411 + 328008716                      |               |
| 228003411  | F165100100020  | 1   | Méca. LUK Ø 280,<br>moyeu 46x50, 8 can.                                 |               |
| 328008716  | F165100100031 F165100100033                                | 2   | Disque AV LUK<br>organique, 10 can. moyeu 23x29                         |               |
| 20305280   | X612197000   | 3   | Butée petit Ø<br>65x97x23   |               |
| 20305180   | X612197100 X61297000000<br>X600197000                      | 4   | Butée grand Ø<br>106x140x25   |               |
| 131027820  | F181100100060 F181100101060<br>F281100101010 F181100101040 | 5   | Méca. LUK Ø 310, simple   | Favorit 4S    |
| 331003526  | F181100101010 Z181100100012<br>F181100100011 F181100100012 | 6   | Disque AV LUK Ø 310<br>organique, 22 can. moyeu 41x45                   |               |
| 3151157001 | H199104100010 345100100020<br>F281100100010                | 7   | Butée SACHS avec support  |               |

PHOTO NON DISPONIBLE



1

PHOTO NON DISPONIBLE



2

PHOTO NON DISPONIBLE



5



3



4



## EMBRAYAGE : MECANISME, DISQUE ET BUTEE

| Reference   | OEM  | Fig | Description   | Type Tracteur   |
|-------------|--|-----|---|---|
| 131002120K  |  |     | Kit embrayage complet,<br>comprend : 131002120 + 331010226<br>+ 3151157001 + 6008 |   |
| 131002120   | F181100100060 Z281100101010<br>F181100101060 F281100101010 | 1   | Méca. LUK Ø 310, simple   | Farmer 4S<br>Favorit 4S 10S 10SA 11S 11SA Favorit 600 600LS 600LSA<br>610LS 611LS 611S  |
| 331010226   | F178100420010 F181100100010<br>F178100420011               | 2   | Disque AV LUK Ø 310<br>organique, 10 can. moyeu 26x32                             |   |
| 3151157001  | H199104100010 345100100020<br>F281100100010                | 3   | Butée SACHS avec support  |   |
| 6008        |  | 4   | Roulement pilote  |   |
| 131002120KT |  |     | Kit embrayage complet,<br>comprend : 131002120 + 331003526<br>+ 3151157001 + 6008 |   |
| 131002120   | F181100100060 Z281100101010<br>F181100101060 F281100101010 | 1   | Méca. LUK Ø 310, simple   | Farmer 4S<br>Favorit 4S 10S 10SA 11S 11SA Favorit 600 600LS 600LSA<br>610LS 611LSA 611S |
| 331003526   | F181100101010 Z181100100012<br>F181100100011 F181100100012 | 5   | Disque AV LUK Ø 310<br>organique, 22 can. moyeu 41x45                             |   |
| 3151157001  | H199104100010 345100100020<br>F281100100010                | 3   | Butée SACHS avec support  |   |
| 6008        |  | 4   | Roulement pilote  |   |



## EMBRAYAGE : MECANISME, DISQUE ET BUTEE

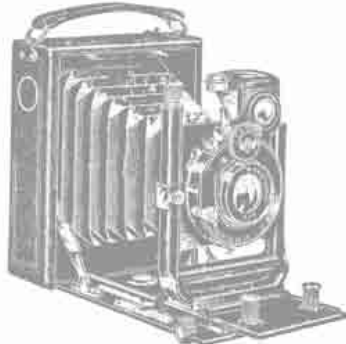
| Reference   | OEM   | Fig | Description   | Type Tracteur   |
|-------------|---|-----|---|---|
| 135001520K  |   |     | Kit embrayage complet, comprend : 135001520 + 335008821 + 3151157001 + 6008 | Favorit 600 611LS 611LSA 612LS 612LSA 614LS 614LSA 615LS 615LSA |
| 135001520Kt |   |     | Kit embrayage complet, comprend : 135001520 + 335003126 + 3151157001 + 6008 |   |
| 135001520   | 285100103050 Z285100103050<br>E285100103050 F285100100005<br>F285100100010 F285100103050                  | 1   | Méca. LUK Ø 350, simple   |   |
| 335008821   | 285100103010 Z285100103010<br>F285100103010 H285100103010   | 2   | Disque AV sachs Ø 350 céramétique, 6 pastilles, 22 can. moyeu 41x45         |   |
| 335003126   | F183100100020 F183100100021<br>H382100420030 Z382100420030  | 3   | Disque AV LUK Ø 350 organique, 22 can. moyeu 41x45                          |   |
| 3151157001  | H199104100010 345100100020<br>F281100100010   | 4   | Butée SACHS avec support  |   |
| 6008        |   | 5   | Roulement pilote  |   |
| 136020220K  |   |     | Kit embrayage complet, comprend : 136020220 + 336000121 + 500037220 + 6008  | Favorit 600 611LS 611LSA 612LS 612LSA 614LS 614LSA 615LS 615LSA |
| 136020220KT |   |     | Kit embrayage complet, comprend : 1136020220 + 335003126 + 500037220 + 6008 |   |
| 136020220   | 385100100010 Z385103100020<br>E382100100010 E384100100020<br>E384102100010 E385100100011<br>E385103100020 | 6   | Méca. SACHS Ø 360, simple   |   |
| 336000121   | 385103420010 Z385103420010<br>H384100420030 H385103420010   | 7   | Disque AV LUK Ø 360 céramétique, 6 pastilles, 22 can. moyeu 41x45           |   |
| 335003126   | F183100100020 F183100100021<br>H382100420030 Z382100420030  | 3   | Disque AV LUK Ø 350 organique, 22 can. moyeu 41x45                          |   |
| 335008821   | 285100103010 Z285100103010<br>F285100103010 H285100103010   | 2   | Disque AV SACHS Ø 350 céramétique, 6 pastilles, 22 can. moyeu 41x45         |   |
| 500037220   | 385100100030 G385100100030  | 8   | Butée à tirer   |   |
| 6008        |   | 5   | Roulement pilote  |   |

PHOTO NON DISPONIBLE



1

PHOTO NON DISPONIBLE



2



3



4



5



6



## EMBRAYAGE : MECANISME, DISQUE ET BUTEE

| Reference  | OEM  | Fig | Description   | Type Tracteur  |
|------------|--|-----|---|--|
| 223001522  | E231103100010 Z231103100010<br>F231103100010   | 1   | Kit Méca. LUK Ø 225/200, double<br>Comprend les 2 disques,<br>moyeu 16x50 8 can.<br>moyeu 21x26 10 can. | Farmer 1E F220 F220/1 F225GT F230GT Farmer 200 231GT |
| 232000121K |  |     | Kit embrayage complet,<br>comprend : 232000121 + 1864482031<br>+ 20305180 + 3151157001 + 28996660       |  |
| 232000121  | E380100100030 Z380100100030  | 2   | Méca. LUK Ø 320/295, double<br>moyeu 36x40 20 can.  |  |
| 1864482031 | Z186126420010 F1864482031<br>F178100420020 H186126420010<br>H192104420010 H192104420020<br>H192104420030 | 3   | Disque AV SACHS Ø 320<br>organique, 10 can. moyeu 26x32   | Farmer F220GT F380GT F380GTA F380GTH                 |
| 20305180   | X612197100 X61297000000 X600197000   | 4   | Butée grand Ø<br>106x140x25   |  |
| 3151157001 | H199104100010 345100100020<br>F281100100010  | 5   | Butée SACHS avec support  |  |
| 28996660   |  | 6   | Roulement pilote  |  |



## EMBRAYAGE : MAITRE-CYLINDRE ET RECEPTEUR

| Reference      | OEM  | Fig | Description  | Type Tracteur  |
|----------------|--|-----|--|--|
| FT178100100052 | G198100100030<br>G178100100052                 | 1   | Maitre cylindre embrayage<br>(pour liquide synthétique)<br>Montage réservoir carré | Farmer 300 303 304 305 306 307 308 309 310 311 312<br>345GT 350GT 360GT 365GT 370GT 380GT 390GT 395GT  |
| FT312100100020 | G312100100020                                  | 2   | Maitre cylindre embrayage<br>(pour liquide synthétique)<br>Montage réservoir rond  | Farmer 300 300LSA 303LS 304LS 304LSA 305LS 305LSA<br>306LS 306LSA 307C 307LS 307LSA 308C 308 308LS<br>308LSA 309 309C 309LS 309LSA 310 310LSA 311 311LSA<br>312 312LSA |
| FT524100100051 | G524100100051<br>G524100100050                 | 3   | Maitre cylindre embrayage  | FARMER 400 409 410 411 412<br>Favorit 700 711 712 714 716<br>Favorit 800 815 817 818<br>Favorit 900 916 918 920 924 926 930<br>Xylon 520 522 524                       |
| FT514100100041 | G514100100041                                  | 4   | Maitre cylindre embrayage  | Favorit 500 509 510 511 512 514 515  |
| FT385100100050 | G385100100050<br>F281100100040<br>281100100210 | 5   | Maitre cylindre embrayage  | Favorit 600 611 611LSA 612 612LSA 614 614LSA 615<br>615LSA   |
| FT100061       | G178100100061                                  | 6   | Cylindre récepteur embrayage   | Farmer 300 303 304 305 306 307 308 309 310 311 312<br>Favorit 600 614 615  |
| FT345100100060 | G345100100060                                  | 7   | Récepteur embrayage<br>Piston Ø 38 mm  | Farmer 300 345GT 345GTM 350GT 360GTF 360GTH 370GT<br>370GTA 380GT 380GTA 380GHA 390GTA 395GHA 395GTA   |
| FT100020       | G385100100020                                  | 8   | Cylindre récepteur embrayage   | Favorit 600 611 612 614 611LSA 612LSA 614LSA 615LSA  |
| FT822100100041 | G822100100041                                  | 9   | Maitre cylindre embrayage  | Favorit 800 815 816 817 818 822 824  |



## TRANSMISSION : ARBRE PDF

| Reference    | OEM           | Fig | Description   | Type Tracteur          |
|--------------|---------------|-----|---|------------------------|
| ZF2052310208 | F284100220011 | 1   | Arbre PDF 540-1000T<br>6 can. 20can. Lg 798 mm<br>Pour Pont AR ZF | Série 600 Tous modèles |
| ZF2052310242 | 2052310242    | 2   | Arbre PDF<br>Flasque 8 trous 6 can. 1.3/8"<br>Pour Pont AR ZF     |                        |



1



2

## EMBAYAGE : CABLE

| Reference  | OEM           | Fig | Description                    | Type Tracteur                          |
|------------|---------------|-----|--------------------------------|--|
| FT17813835 | G178138350010 | 1   | Cable embayage<br>Lg = 1280 mm | Farmer 300 303 304 305 306 307 308 309 |
| FT17810035 | G198100350010 | 2   | Cable embayage<br>Lg = 1365 mm | Farmer 300 310 311 312                 |